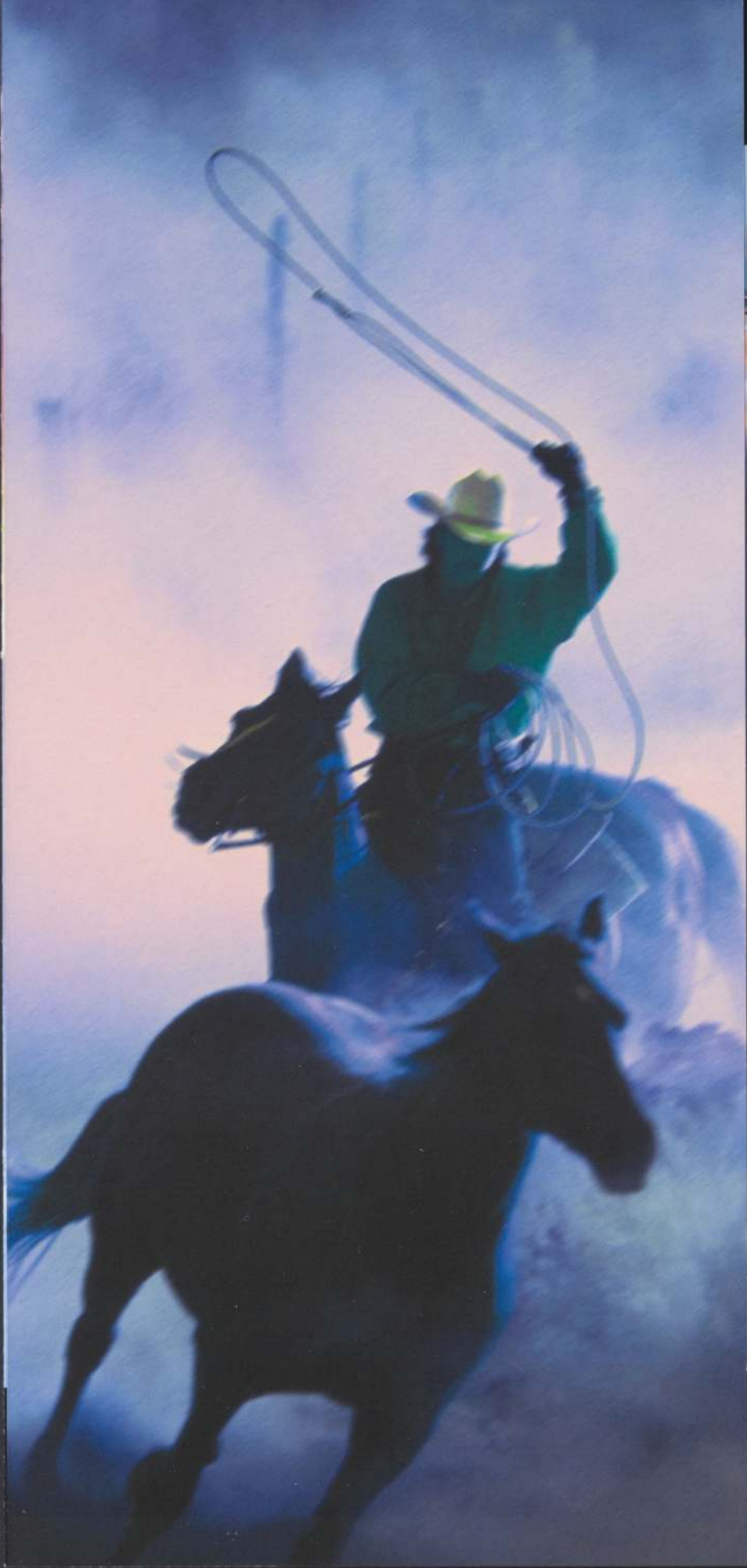


FALCON UTE



We have ignition





FALCON UTE



UNBELIEVABLE



THE GRUNT.

XR

A ute to stir your soul like no ute has ever done before. Better, a whole range of them. Sixes and V8s. Utes to take a full one tonne. Or to take out on the town. Sports utes like the exciting XRs. If the smell of roasting rubber doesn't tell you what the XR8 is all about, the special quad lamp front end will. It's a styling feature unique to all XR models. And that means performance of awesome proportions. Here are the latest in a line of Ford utes that goes right back to the pioneering Lew Bandt ute of 1934 - the first ute ever. From the 200 kW XR8 through to the work hungry one-tonners, on or off the job, Falcon is, as always, Australia's favourite ute.

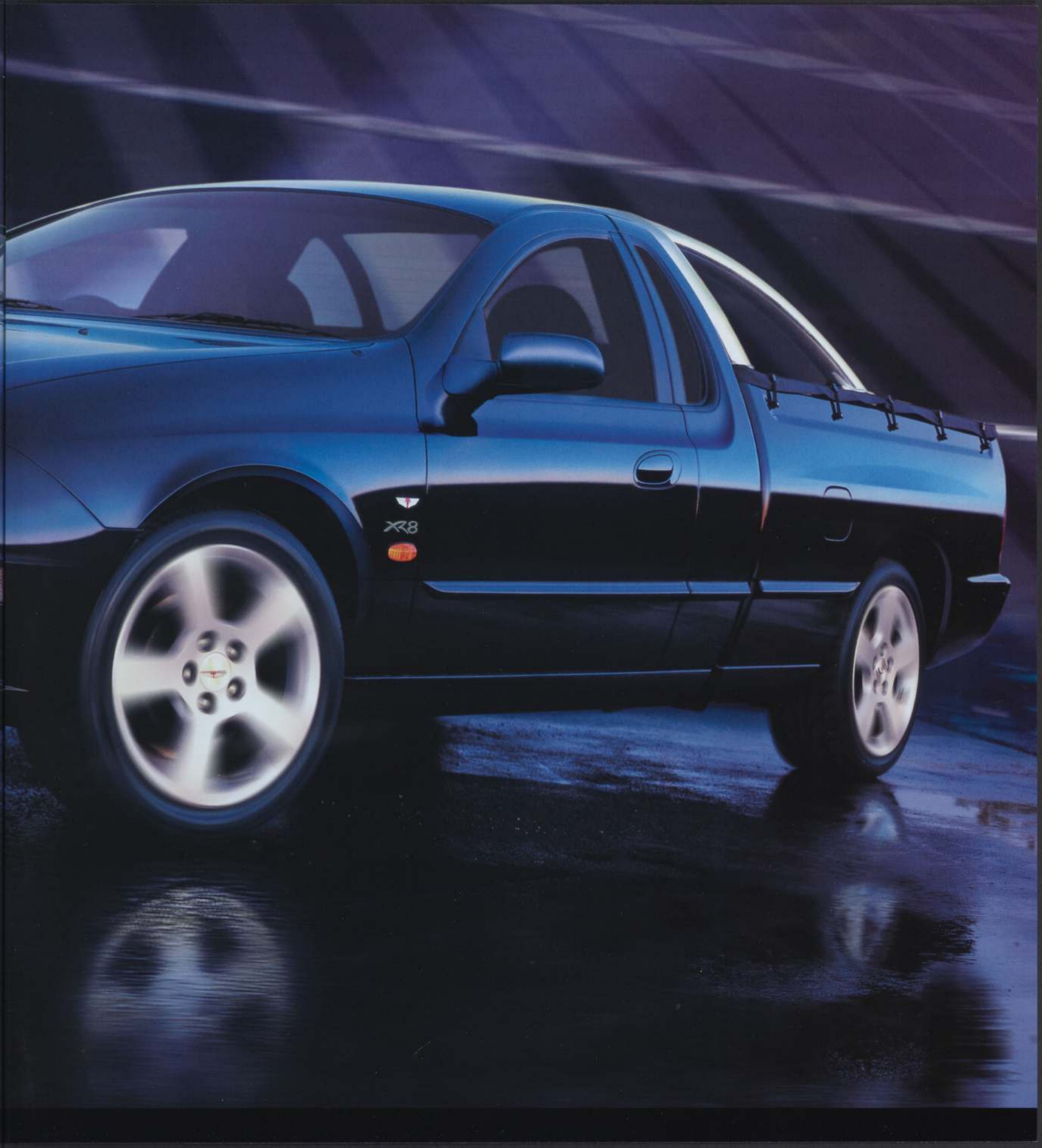


PERFORMANCE THAT REALLY GRABS YOU...

...and pushes you back in your seat. In XR8, it comes from a 200kW 5.0 litre V8 with GT40P heads and roller rockers with low friction roller bearings, as used in Ford V8 "Supercars". High flow exhaust extractors are fitted to maximise breathing efficiency. The XR6 will also blow you away, with plenty of show and heaps of go. It delivers 172 kW of power through a High Output 4.0 litre 6-cylinder OHC engine. Variable Cam Timing (VCT) technology adjusts camshaft timing for greater low speed torque and exhilarating high end power. A sports-tuned exhaust system completes the package. On all XR utes, sports suspension with a limited slip differential provides plenty of traction under hard acceleration and cornering. Hot 17" alloys on low profile rubber complete the performance picture. All you have to do is add the optional full body kit by Tickford.



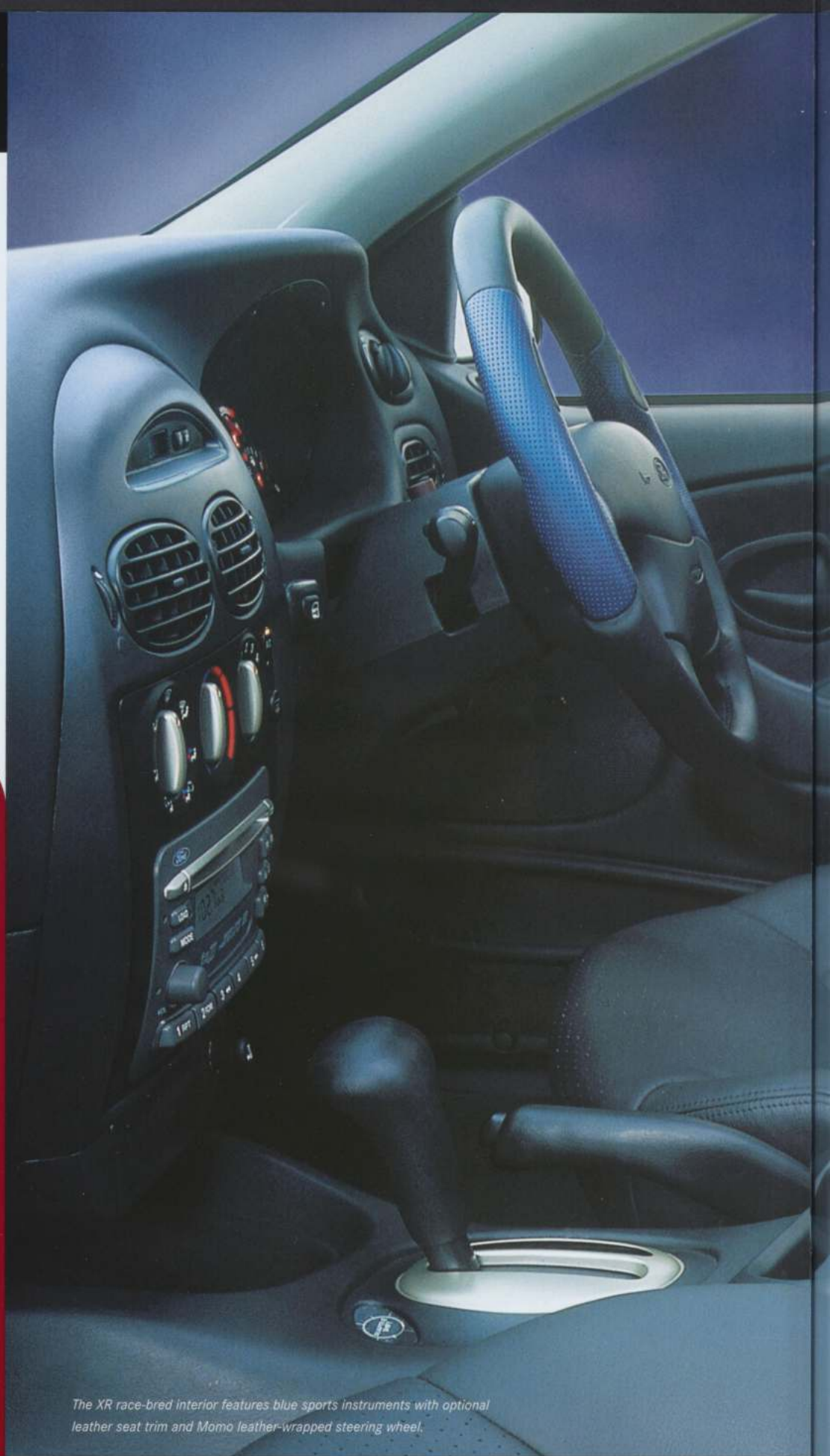
XR8 looks great with optional sports bar.





EVERYTHING'S GEARED FOR AN UNBELIEVABLE RIDE.

You're harnessed in a seat of real power. Feel the firm, comfortable support that comes from the contoured sports seats. Scan the full array of sports instruments. Note how easily the controls come to hand - including those of the 6-speaker audio system with 6-stack CD player. With power windows, air conditioning and cruise control, you'll discover the warm charcoal XR interior is equipped to satisfy your deepest driving passion. For extra luxury, choose the unmistakable feel of optional Howe leather seat trim. And, for superb feel and excellent grip, the optional sporty, leather-trimmed Momo steering wheel.



The XR race-bred interior features blue sports instruments with optional leather seat trim and Momo leather-wrapped steering wheel.



Optional sports body kit, including rocker mouldings and front and rear skirts, gives your ute a more aggressive look.



XR6 and XR8 are available with optional adaptive shift auto that 'learns' to match gear changes to your driving style.

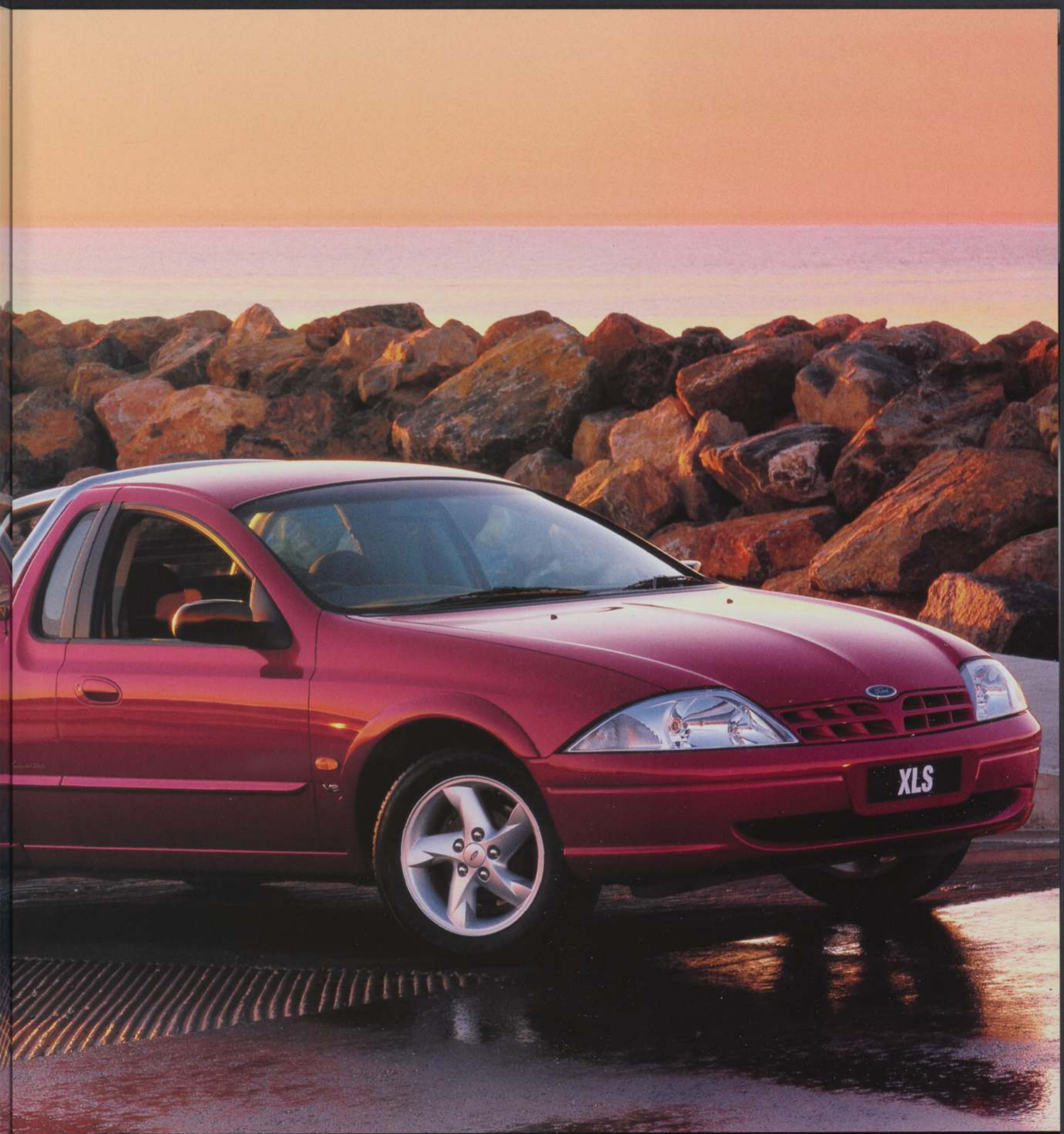


XR8 and XR6 sport 17 x 8-inch alloy wheels. (Note: all models fitted with alloy wheels are equipped with a steel spare wheel.)

XLS



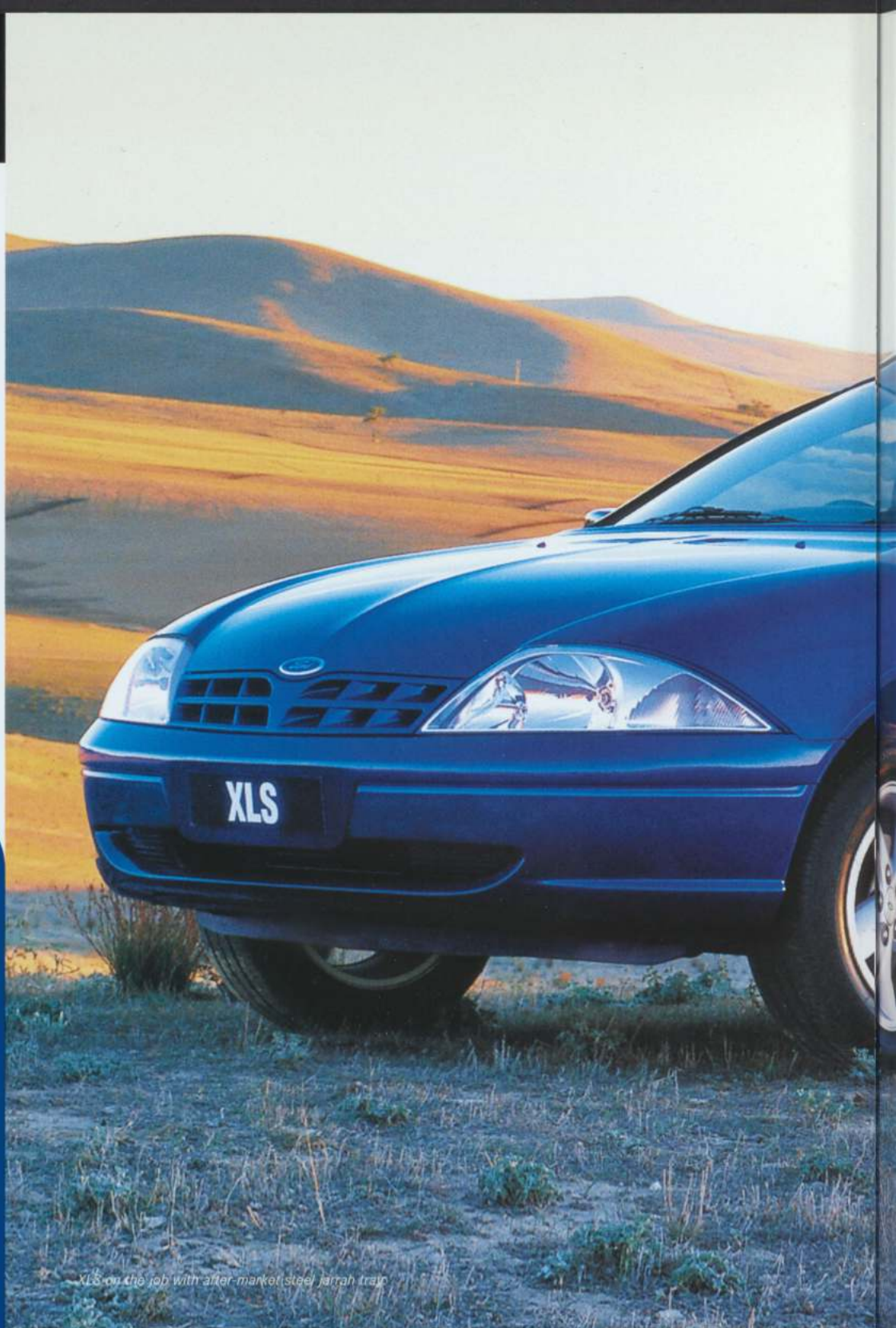
XLS equipped with standard tonneau and 16-inch alloy wheels (optional low lift, sports bar, and wheel arch flares). Note: All models fitted with alloy wheels are equipped with a steel spare wheel.



XLS

WORK HARD. PLAY HARDER.

No ute handles a job, cares for your comfort or can pack more driving fun into a weekend than Falcon. The Tickford-tuned sports suspension, power steering and 16-inch 5-spoke alloy wheels are some of the reasons. The 'Super Cab' interior is another. It makes more rearward seat adjustment possible, and provides plenty of stowage space. At the business end, choose 'Style Side' or chassis cab bodies that offer payloads of up to 715 kg and the option of a 175 kW V8 engine. When the sun sets on your working week, Falcon XLS puts a sporty spin on whatever you want to do and wherever you want to go.



XLS on the job with after-market steel jarran tray



Optional air conditioning and standard single CD stereo feature modern ergonomic controls. (Cassette player optional on XL and XLS.)





What do you want to do this weekend? Whatever you're aiming to do, wherever you're planning to go, a Falcon Ute can be part of the fun.



All Falcon Ute models offer the added protection of a driver airbag as standard equipment. A passenger airbag is available as an option.



XLS

A WISH-LIST ON WHEELS.

Feel the comfort and support of the sports seats. They easily adjust to give you the most comfortable amount of lumbar support. If this is work, somebody has to do it - and that might as well be you, right? Switch on the 100 watt 4-speaker sound system with single-slot CD player and power antenna. The volume and tuning controls for the audio system are conveniently located on the steering wheel. Falcon XLS also has the convenience of cruise control for the freeway. The modern, ergonomically efficient and easy-to-read instrument panel includes a distance-to-empty read-out.



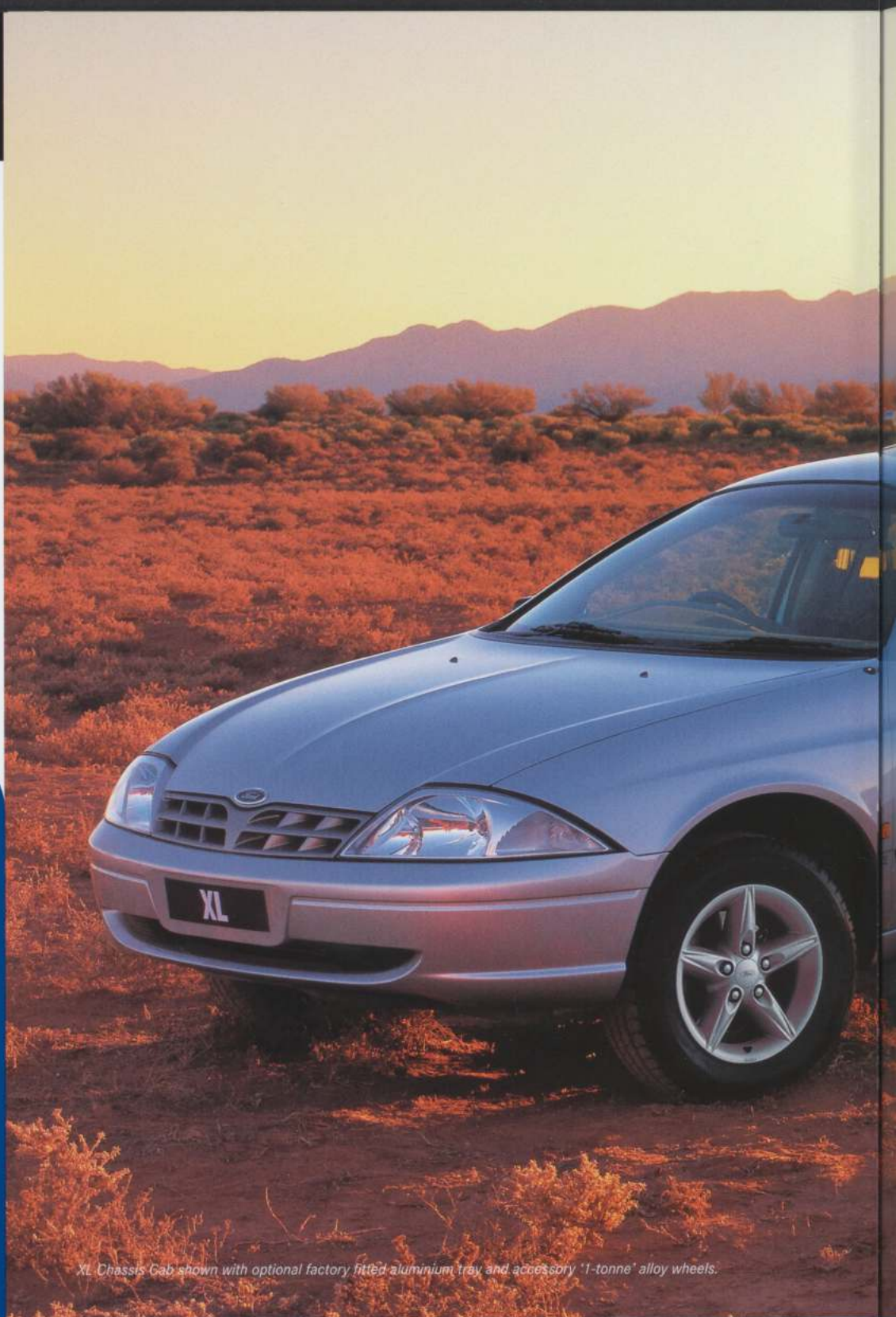


XLS interior in Warm Charcoal featuring 4 speaker CD/radio with optional cassette and optional passenger airbag. XLS Chassis Cab fitted with aftermarket jarrah tray.

XL

UNBELIEVABLE WORKHORSE.

Looking for versatility? No other Aussie ute gives you more choice or versatility than Falcon. XL chassis cabs that can carry a full one-tonne. XL 'Style Sides' that'll carry 800 kg with the standard suspension, or you can option up to the 'one-tonner'. V8 power? If you want it, you can have it in an XL Falcon. These work-hungry utes can also be equipped with tow packs rated up to 2,300 kg. But not only is Falcon a strong performer in the work department, it is also a winner inside the cab. Driver airbag, single CD player, steering wheel mounted audio controls and a speed alert feature are all standard on XL for your driving comfort and convenience.

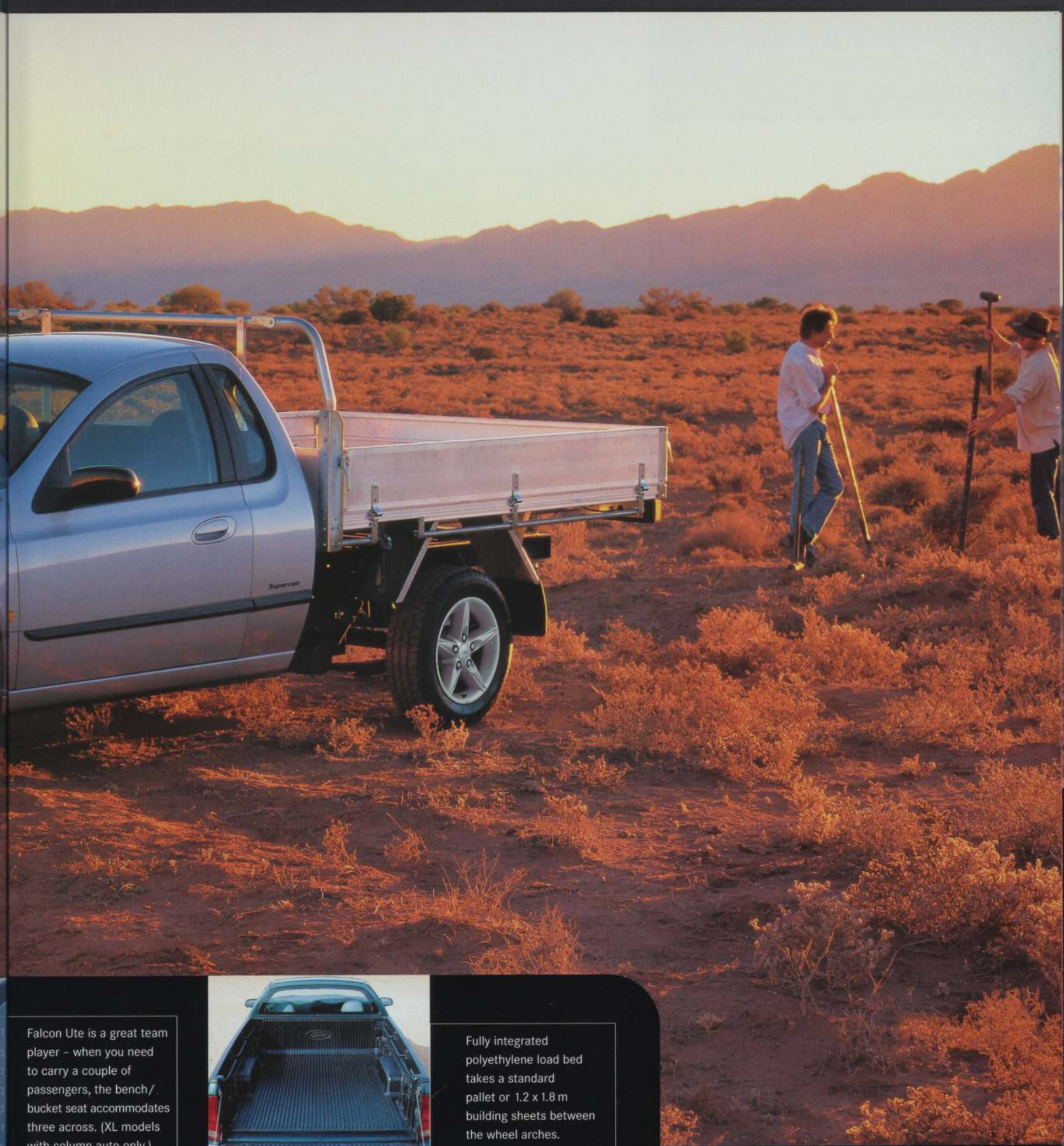


XL Chassis Cab shown with optional factory fitted aluminium tray and accessory '1-tonne' alloy wheels.



Optional Cabin tidy makes the most of Falcon Ute's super cab storage space and is ideal for all those loose items that would otherwise get lost under the seat.





Falcon Ute is a great team player - when you need to carry a couple of passengers, the bench/bucket seat accommodates three across. (XL models with column auto only.)



Fully integrated polyethylene load bed takes a standard pallet or 1.2 x 1.8 m building sheets between the wheel arches.



DEDICATED LPG. UNBELIEVABLE ECONOMY.

The dedicated LPG option on Falcon 4.0 litre 6-cylinder utes gives you the economic benefits of gas – with no noticeable difference in performance compared to the equivalent petrol models. Falcon's dedicated LPG isn't a post-production modification. It's a regular model built on the Falcon production line. The system is fully integrated into the ute's instrumentation and distance-to-empty trip computer.



XL Chassis Cab fitted with after-market steel tray stock cage and accessory '1-tonne' alloy wheels.



ACCESSORIES

BUILD YOUR OWN FALCON UTE WITH GENUINE FORD ACCESSORIES.

You can make your Falcon ute work harder and look meaner, by picking and choosing from these purpose designed accessory packs...

Sports Pack

Alloy Wheels	Exhaust Extension
Fender Flares	Momo Steering Wheel
Sports Bar	Momo T-Bar Handle
Momo Gear Knob	Motorcycle Tie-Down

Comfort & Convenience Pack

Cruise Control	6-Stack CD Changer Kit
Front Sunvisor	Air Conditioning Kit
Cabin Tidy	Steel Rope Rails
Ford Navigation	

Heavy Duty Pack

Mudflaps	1-Tonne Alloy Wheels
Rear Sunshade	Fire Extinguisher
Rubber Mats	Smart Bull Bar
Sump Guard	Towbar
Steel Rope Rails	

Protection Pack

Alarm Kit	Bonnet Protector
Carpet Mats	Dash Mat
Mudspats	Headlight Covers
Weathershields	



Sports Bar.
3-inch polished alloy.
Adds a load of style.



Sports Momo Steering Wheel.
Leather bound for comfort and feel.
Gear knob and T-bar handle also available.



Ford Navigation.
Voice guidance leads you to your destination. (When fitted, Ashtray deleted.)



Falcon XLS Ute shown with optional sports bar, fender flares, weathershields and Smart Bull Bar.



Motorcycle Tie-Down.

Easily packs away when not in use.



Sump guard.

The ultimate in protection.



15-inch Alloy Wheels.

Look great and one-tonne rated.



Cabin Tidy.

Custom-designed to fit behind seats.



1600 kg Towbar.

Genuine Ford product.

SPECIFICATIONS

MECHANICALS

ENGINE	Intech 6-CYL OHC			V8 OHV	
	LPG	Standard	HO VCT	Standard	High Output
Displacement (cc)	3984	3984	3984	4942	4942
Bore/stroke (mm)	92/99	92/99	92/99	102/76	102/76
Compression ratio	9.6:1	9.6:1	9.6:1	9.1:1	9.1:1
Maximum power	143kW @ 4500	157kW @ 4900	172kW @ 5000	175kW @ 4600	200kW @ 5000
Maximum torque	362Nm @ 2750	357Nm @ 3000	374Nm @ 3150	395Nm @ 3200	412Nm @ 3500
Fuel tank capacity	110Lt (88Lt useable) 82 Litres			82 Litres	82 Litres

TRANSMISSION GEAR RATIOS

	1st		2nd		3rd		4th		5th		Rev	
	Manual	Auto	Manual	Auto	Manual	Auto	Manual	Auto	Manual	Auto	Manual	Auto
Manual - 5-speed	3.35	3.23	1.93	1.84	1.29	1.20	1.00	0.91	0.73	0.64	3.15	2.96
- I6, I6 HO	2.95	2.86	1.94	1.84	1.34	1.25	1.00	0.91	0.73	0.64	2.76	2.57
- V8, V8 HO												
Automatic - 4-speed	1st	2nd	3rd	4th	1st	2nd	3rd	4th	1st	2nd	3rd	4th
I6, I6 HO VCT, V8 and V8 HO	2.39	1.45	1.00	0.68	2.39	1.45	1.00	0.68	2.39	1.45	1.00	0.68

REAR AXLE RATIO

	I6		V8		I6 HO/V8 HO	
	Manual	Auto	Manual	Auto	Manual	Auto
XL - 1-tonne suspension	3.45 HD	3.23 HD	3.45 HD	3.23 HD		
XL - 3/4-tonne suspension	3.23	3.23	3.45 HD	3.23		
XLS - Sports suspension	3.23	3.23	3.45 HD	3.23		
XR (LSD standard) - Sports suspension					3.45	3.45

ELECTRICAL

	I6	V8
Battery	12V - 56AH	12V - 56AH
Alternator 12V	110 Amp	130 Amp

CLUTCH

	I6	V8
Type	Diaphragm spring	Diaphragm spring
Diameter	254.0 mm	268.0 mm

STEERING

Type	Rack and pinion, power assisted
Turns (lock to lock)	3.1
Turning circle (kerb to kerb)	11.5 m

BRAKES

Front and Rear	Disc with asbestos-free pads
Park brake	Floor-mounted hand park brake (LHS of driver)
- XL bench	Seat-mounted hand park brake (RHS of driver)
ABS	Standard on XR models

SUSPENSION TYPE

Front	Fully independent double wishbone
Rear	Wide Trac Hotchkiss

TOWING CAPACITY*

Description	Option	Dealer Fit Option	Dealer Fit Option
	Ford Approved 1600kg Rated Tow Pack (Flat Tongue Bar)	Ford Approved Heavy Duty Tow Pack (with 1600kg Rated Ball Mount Square Tube Bar)	Ford Approved 2300kg Tow Pack (with Load Distributing Hitch, Square Tube Bar)
4-speed auto	1600 kg	1600 kg	2300 kg
5-speed manual	1200 kg	N/A	N/A

DIMENSIONS (mm)

EXTERIOR	XL - 1-tonne			XL - 3/4-T		XLS - Sport			XR
	SSB	AL Tray	C/Cab	SSB	SSB	AL Tray	C/Cab	SSB	
Overall length	5077.0	5340.5	4938.2	5077.0	5077.0	5340.5	4938.2	5077.0	
Overall width (excluding mirrors)	1870.5	1908.1	1870.5	1870.5	1870.5	1908.1	1870.5	1870.5	
Wheelbase	3095.8	3095.8	3095.8	3095.8	3095.8	3095.8	3095.8	3095.8	
Front track	1566.2	1566.2	1566.2	1566.2	1566.2	1566.2	1566.2	1566.2	
Rear track	1546.5	1546.5	1546.5	1546.5	1546.5	1546.5	1546.5	1546.5	
Front overhang	917.5	917.5	917.5	917.5	917.5	917.5	917.5	917.5	
Rear overhang	1063.7	1327.2	924.9	1063.7	1063.7	1327.2	924.9	1063.7	
CARGO									
Configuration	SSB			Aluminium Tray					
Load length - at floor level	1818.8			2209.0					
- at belt level	1848.0			2209.0					
Cargo width - between wheelhouses	1204.5			1804.0					
Rear opening width - at floor & belt level	1394.0			1804.0					
Liftover height - 1-tonne suspension	746.1			914.3					
- 3/4-tonne suspension	745.1			N/A					
Cargo depth	410.1			240.8					

*Without the Ford approved Tow Pack, the towing capacity is 500 kg

**Payload - does not include the mass of vehicle occupants, options or body additions. The mass of these need to be deducted from the stated payload to give the available cargo mass.

VEHICLE MASSES (kg)

STYLE SIDE BOX (XL)

	XL - 1-tonne suspension	
Series and suspension	I6	
Engine	Manual	Auto
Transmission		
Gross vehicle mass	(2)	2740
Kerb mass	(4)	1640
**Payload (before occupants & options) (1)		1100
Max trailer (braked)		1200
Gross combination mass	(3)	3810

STYLE SIDE BOX (XLS AND XR)

	XLS - Sports suspension	
Series and suspension	I6	
Engine	Manual	Auto
Transmission		
Gross vehicle mass	(2)	2190
Kerb mass	(4)	1640
**Payload (before occupants & options) (1)		550
Max trailer (braked)		1200
Gross combination mass	(3)	3260

CHASSIS CAB (XL AND XLS)

	XL - 1-tonne suspension	
Series and suspension	I6	
Engine	Manual	Auto
Transmission		
Gross vehicle mass	(2)	2740
Kerb mass	(4)	1475
**Payload (before occupants, options & body) (1)		1265
Max trailer (braked)		1200
Gross combination mass	(3)	3810

ALUMINIUM TRAY (XL AND XLS)

	XL - 1-tonne suspension	
Series and suspension	I6	
Engine	Manual	Auto
Transmission		
Gross vehicle mass	(2)	2740
Kerb mass	(4)	1590
**Payload (before occupants & options) (1)		1150
Max trailer (braked)		1200
Gross combination mass	(3)	3810

FEATURES

ENGINE & TRANSMISSION

- 4.0L Intech OHC 6-cylinder
- 4.0L Intech OHC 6-cylinder LPG (4)
- 5.0 litre V8 (includes ABS & LSD)
- High Performance 4.0L VCT 6-Cylinder
- High performance 5.0 litre V8
- 5-speed manual transmission
- 4-speed column automatic transmission (9)
- 4-speed electronically controlled floor auto. transmission
- 4-speed electronically controlled floor auto. transmission with 'adaptive' shift
- Electronic engine control (EEC-V) system

MECHANICAL

- Power assisted rack and pinion steering
- Anti-lock brakes (ABS) (6)
- Limited slip differential (LSD)
- Single outlet exhaust system
- Dual outlet exhaust system
- Aluminium driveshaft

(1) Payload values are approximate only. Rear axle load must not exceed 22kg to the front axle load and 22kg to the rear axle load, reducing the available payload. (2) Gross vehicle mass as measured at the tyre to ground interface. (3) Gross combination mass as measured at the tyre to ground interface. (4) Kerb mass values are approximate only. (5) Gross vehicle mass as measured at the tyre to ground interface. (6) ABS is standard on all models. (7) ABS is standard on all models. (8) ABS is standard on all models. (9) ABS is standard on all models.

SUSPENSION WITH A/C		XL - 3/4-TONNE SUSPENSION WITH A/C			
V8		I6		V8	
Manual	Auto	Manual	Auto	Manual	Auto
2740	2740	2420	2420	2420	2420
1670	1690	1620	1640	1650	1670
1070	1050	800	780	770	750
1200	2300	1200	2300	1200	2300
3810	4790	3490	4470	3490	4470

SUSPENSION WITH A/C		XR - SPORTS SUSPENSION WITH A/C			
V8		I6 HO		V8 HO	
Manual	Auto	Manual	Auto	Manual	Auto
2190	2190	2220	2220	2220	2220
1670	1690	1670	1690	1690	1710
520	500	550	530	530	510
1200	2300	1200	2300	1200	2300
3260	4240	3290	4270	3290	4270

SUSPENSION WITH A/C		XLS - SPORTS SUSPENSION WITH A/C			
V8		I6		V8	
Manual	Auto	Manual	Auto	Manual	Auto
2740	2740	2190	2190	2190	2190
1505	1525	1475	1495	1505	1525
1235	1215	715	695	685	665
1200	2300	1200	2300	1200	2300
3810	4790	3260	4240	3260	4240

SUSPENSION WITH A/C		XLS - SPORTS SUSPENSION WITH A/C			
V8		I6		V8	
Manual	Auto	Manual	Auto	Manual	Auto
2740	2740	2190	2190	2190	2190
1620	1640	1590	1610	1620	1640
1120	1100	600	580	570	550
1200	2300	1200	2300	1200	2300
3810	4790	3260	4240	3260	4240

XL		XLS		XR
SSB	Chassis Cab	SSB	Chassis Cab	SSB
S	S	S	S	S
O	O	O	O	S - XR6
O	O	O	O	S - XR8
S	S	S	S	S
O	O	O	O	O
O	O	O	O	O
S	S	S	S	S
S	S	S	S	S
O	O	O	O	S
O	O	O	O	S
S	S	S	S	S - XR6
S	S	S	S	S - XR8
S	S	S	S	S

SUSPENSION & BODY

	XL		XLS		XR
	SSB	Chassis Cab	SSB	Chassis Cab	SSB
1-tonne suspension	O	S			
3/4-tonne suspension	S				
Sports suspension			S	S	S
Aluminium tray		O		O	
Integrated Polyethylene load bed with tie-downs and load dividers	S		S		S

EXTERIOR

15" x 6" JISO silver steel wheel	S	S			
P205/65 HR 15 tyre	S				
P205/65 HR 15 G26 'one-tonne' tyre	1-tonne Opt	S			
5-spoke 16" x 7" JISO alloy wheel			S	S	
P215/55 VR 16 tyre			S	S	
5-spoke 17" x 8" JISO alloy wheel					S
P235/45 ZR 17 sports tyre					S
15" x 6" JISO steel spare wheel	S	S	S	S	S
Laminated windscreen, tinted side/rear glass, rear demister	S	S	S	S	S
Electric remote control exterior mirrors	S	S	S	S	S
Fixed intermittent windscreen wipers	S	S			
Variable and speed sensitive intermittent wipers			S	S	S
Smartshield security system, remote central locking/keyless entry	S	S	S	S	S
Tonneau cover - black with 2 steel bows	O		S		S
Body colour door handles and bumpers	S	S	S	S	S
Body colour bodyside protection mouldings			S	S	S
Argent coloured grille	S	S			
Body colour grille			S	S	
Body colour mirrors					S
Quad round halogen lamps					S
Body styling kit					O

INTERIOR

Driver's airbag, steering wheel mounted audio volume and station controls, speed alert, digital clock	S	S	S	S	S
Passenger airbag	O	O	O	O	O
Charcoal perforated leather steering wheel					S
Momo steering wheel/Momo steering wheel & gear knob			O	O	O
Adjustable rake & reach steering column (floor shift only)	S	S	S	S	S
Cruise control with steering wheel mounted switches	O	O	S	S	S
Power windows			S	S	S
Cloth trimmed bench-bucket seat (5)	O	O			
Cloth trimmed bucket seats	S	S	S	S	
Cloth trimmed sports seats					S
Leather trimmed sports seats					O
Rubber floor covering	S	S			
Carpet floor covering	O	O	S	S	S
Adjustable seat belt height and driver seat thigh support	S	S	S	S	S
Adjustable lumbar support for driver & passenger (5)	S	S	S	S	S
Quick tilt forward seats	S	S	S	S	S
CFC-free air conditioning	O	O	O	O	S
Sunvisor vanity mirror (driver/passenger)	S	S	S	S	S
Power antenna, overhead sunglasses holder console, interior cargo net			S	S	S
50 watt 2-speaker AM/FM stereo radio with single CD	S	S			
50 watt 2-speaker AM/FM stereo radio with single CD and cassette	O	O			
100 watt 4-speaker AM/FM stereo radio with single CD			S	S	
100 watt 4-speaker AM/FM stereo radio with single CD and cassette			O	O	
100 watt 4-speaker AM/FM stereo radio with 6-disc in-dash CD (8)			O	O	
100 watt 6-speaker AM/FM stereo radio with 6-disc in-dash CD					S
Wiring facility for cargo lamp & high mount stop lamp	S	S	S	S	S
Child seat anchorage connection point	S	S	S	S	S
Gauges: Speedometer, tachometer, fuel level, water temperature	S	S	S	S	S
Gauges: Unique 240 km/h speedometer, oil pressure and battery voltage in blue graphic display					S
LCD display for odometer, tripmeter distance to empty (DTE) function, and speed alert	S	S	S	S	S
Warning lights for: Oil press, high beam, alt fail, lamps on					
Warning lights for: brake fail, handbrake on, low fuel, high temp, rear demist, door ajar, seat belt, ABS*, airbag, low coolant (7)	S	S	S	S	S
Audible warnings: Turn signal, lights on, high engine temp, low fuel, low oil and speed alert	S	S	S	S	S

* 1700kg on 3/4-tonne suspension; 1700kg on 1-tonne suspension; 1260kg on 1-tonne suspension. (5) Bench-Bucket seat fitted with Column Automatic Option only, driver seat only with lumbar adjustment. (6) LSD mandatory with 1 tonne & ABS combination. (7) Low coolant warning light on V8 and Dedicated LPG only. (8) Cassette player not available with 6-disc in-dash CD. # Activated when option is selected if not standard.

(5) Bench-Bucket seat fitted with Column Automatic Option only, driver seat only with lumbar adjustment. (6) LSD mandatory with 1 tonne & ABS combination. (7) Low coolant warning light on V8 and Dedicated LPG only. (8) Cassette player not available with 6-disc in-dash CD. # Activated when option is selected if not standard.

AN OWNERSHIP EXPERIENCE YOU'RE GOING TO LOVE.

A great car is just the beginning.

After you've bought your new Ford, we support you with a wide range of services that aim to make you one of the most satisfied vehicle owners in Australia.

Ford Roadside Assistance Plan.*

It is reassuring to know that Ford provides you with the best possible ownership experience, in the form of Australia-wide 24-hour emergency roadside assistance, 365 days a year, via our toll-free hotline 1800 133 673.

The number is clearly shown on your personal owner identification card which you will receive with your Ford Roadside Assistance Plan Introduction Pack. The Ford Roadside Assistance Plan covers you for three years from the vehicle's first registration. Among the many benefits offered are:

- 24-hour Emergency Roadside Assistance.
- Emergency towing.
- Flat battery assistance.
- Out-of-fuel assistance.
- Vehicle access/replacement of lost keys.
- Direction assistance.
- Urgent message relay anywhere in Australia.
- Taxi ride up to the value of \$25 where your vehicle cannot be mobilised and must be transported.

3 year/100,000 km new car warranty.†

For three years or 100,000 km, whichever comes first, your Ford is covered against any defects in factory materials or workmanship. This also applies to the Ford Approved accessories you may have had fitted before you took delivery.

5 year warranty against perforation corrosion.‡

It's reassuring to know that the original body of your gleaming new Ford is guaranteed against perforation corrosion for the first five years of its life. If perforation corrosion occurs, we'll fix it for free.

Financing your vehicle?

Ford Credit is the world's largest automotive finance company and offers approved applicants a range of specialised products to meet your financial needs. These include consumer loans, Corporate Hire Purchase, Ford Leasing and Red Carpet Options. For further information, ask at your Authorised Ford Dealer.

Want to contact us?

For answers to your questions, or help with any problem, contact our Customer Relationship Centre. You'll find us responsive to your needs. Free call 1800 333 306.

Running a fleet?

Our Fleet Communications Centre is available to assist fleet customers with information on Ford products and services. Call 1800 673 207.

Visit us on the web.

If you want more information on Ford or our entire product range, visit us on the Internet at www.ford.com.au. Your Ford Dealer will be able to tell you more about how Ford looks after you, long after you've bought your vehicle.

Conditions and exclusions apply. See your Authorised Ford Dealer for details. † Not applicable on vehicles with major body modifications.

This brochure is designed to provide you with a general introduction to the Ford Products (including available optional equipment) referred to, and should be read in conjunction with the latest specification sheet. Because of changes in conditions and circumstances Ford* reserves the right, subject to all applicable laws, at any time, at its discretion, and without notice, to discontinue or change the features, designs, materials, colours and other specifications and the prices of their products, and to either permanently or temporarily withdraw any such products from the market without incurring any liability to any prospective purchaser or purchaser. The latest specification sheet should be referred to for information on the availability, ordering and use of optional equipment. Always consult an Authorised Ford Dealer for the latest information with respect to features, specifications, prices, optional equipment and availability before deciding to place an order. *FORD MOTOR COMPANY OF AUSTRALIA LIMITED. (A.B.N. 30 004 116 223) Registered Office: 1735 Sydney Road, Campbellfield, Victoria 3061, Australia. Printed July 2001.

FCL 3417

BUILT



TOUGH



We have ignition