



*By appointment to the President of the Birdsville 4x4 Club.*



Welcome to..  
**BIRDSVILLE**  
 Population 100  
 STARTING POINT OF THE  
 FAMOUS BIRDSVILLE TRACK  
 SHIRE AREA 97,300 SQ. KM<sub>s</sub> (POP. 280)

the even more famous Birdsville Track. Hundreds of kilometres of seemingly endless dirt track. And thousands of kilometres of merciless desert, tyre-shredding gibber plains and about 1,100 consecutive sand dunes. The country that claimed Burke and Wills. The kind of country that still tests anyone and any machine.

Which is where Peter Barnes comes in. Better known as Barnesy, he runs Birdsville Auto Service.

**RAA WARNING RAA**

EXTREME HEAT, SAND DRIFT AND OTHER HAZARDS BEYOND THIS POINT REQUIRE SPECIAL PRECAUTIONS.

① **CALL AT BIRDSVILLE POLICE STATION FOR ADVICE BEFORE DEPARTURE.**

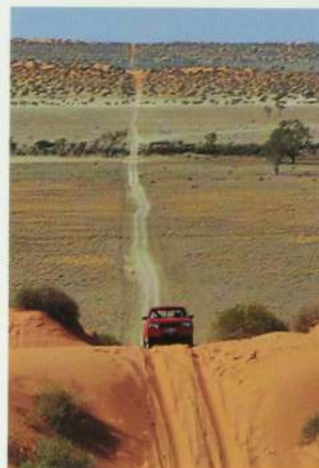
② **ENSURE THAT EXTRA RATIONS, WATER AND FUEL CARRIED ARE ADEQUATE TO ALLOW FOR DELAYS.**

③ **IN THE EVENT OF MISHAP DO NOT LEAVE YOUR VEHICLE.**

Birdsville. Famous for its one and only pub. For its horse race. For being the starting point of

He fixes most things that get broken along the Birdsville Track. And he'll rescue just about anything that won't make it into Birdsville.

But as they say, all work and no play would make Barnesy a dull boy. That's why in his spare time Barnesy is also President of the



# "I reckon it's ne

Birdsville 4x4 Club. Because he likes to drive for fun as well as work.

His choice of 4 wheel drive? The Ford Courier 2.6 litre XL Super Cab.

It might seem like a surprising choice. But not when you know a bit more about the Ford Courier. First, there's no more powerful engine in its class. It's light but very strong.

As Barnesy says: "It's got real go for its size". And importantly: "It'll go up sand hills all day".

The reason is simple. The Ford Courier's

'go' comes from its 2.6 litre EFI petrol engine which delivers a class-leading 92 kW of power or 22% more power than the Toyota HiLux. And there's never been a Courier with as many performance and comfort features as this one.

"It's got heaps of low-down torque," says Barnesy. "You need that kind of power out here."

But Barnesy is also impressed with the gearing

**BIRDSVILLE**  
**ENTRA**

in the Courier, "Look, there's no use having heaps of power if you can't get the power on the ground".

Power steering is now standard across the entire Courier XL range. And the keener recreational drivers will really appreciate the new tachometer.

Courier's spacious cabin has always been appreciated.





**AGE CLUB INC.**  
**RANCE**

Now it's even better than ever. The new cabin is packed with

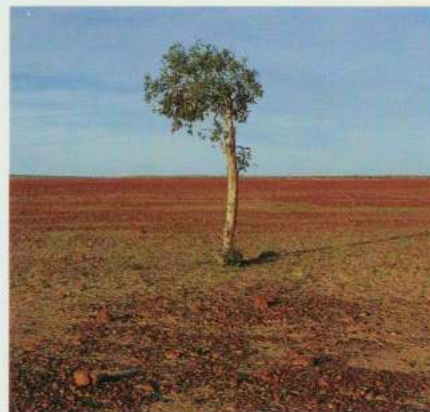
great features for even more comfort, convenience and enjoyment. As Barnesy puts it: "After driving for 500 kms across the desert, I need to be able to get out as fresh as when I got in. And I can do it in this."

And, of course, as part of the package you get tilt adjustable steering wheel, lockable glove box



But the Courier's not just a work-truck. It's also great for having fun off the road, which is where Barnesy really likes to get into it.

And that's where the Birdsville 4x4 Club comes in. People from all over Australia want to come to Birdsville to see the truly unique landscape and enjoy it to the full in their 4WD's.



# near bullet-proof."

*Peter Barnes. President, Birdsville 4X4 Club.*

and a powerful AM/FM stereo radio/cassette player.

On the outside, white wheels add that extra touch of style and body side mouldings provide even more protection when you're working in close.

To go with Courier's class-leading power you get a generous 1500kg\* towing capacity. Now that's really

important to Barnesy: "I've got to be able to help people stuck right out in the dunes. And then I might have to tow someone across the desert for 500 kms."

Toughness and reliability are built-in: "I reckon it's near bullet-proof," he says with a broad grin.

Of course Barnesy's XL Super Cab is only one of a range of Couriers. Because there is a wide selection to choose from; 4x4, 4x2 one-tonne pickups, Chassis Cabs, Crew Cabs and Super Cabs. Plus your choice of petrol or diesel engines.

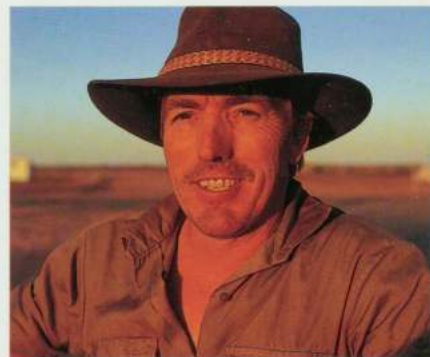
Barnesy's word for it. Give it a go yourself. And if you're unlucky enough to break down on the Birdsville track, look out for Barnesy and hope he can come to your rescue in his bright red Courier.

To see how good the Ford Courier is for yourself, you don't have to go to Birdsville. Just drop in to see your local Ford Dealer.

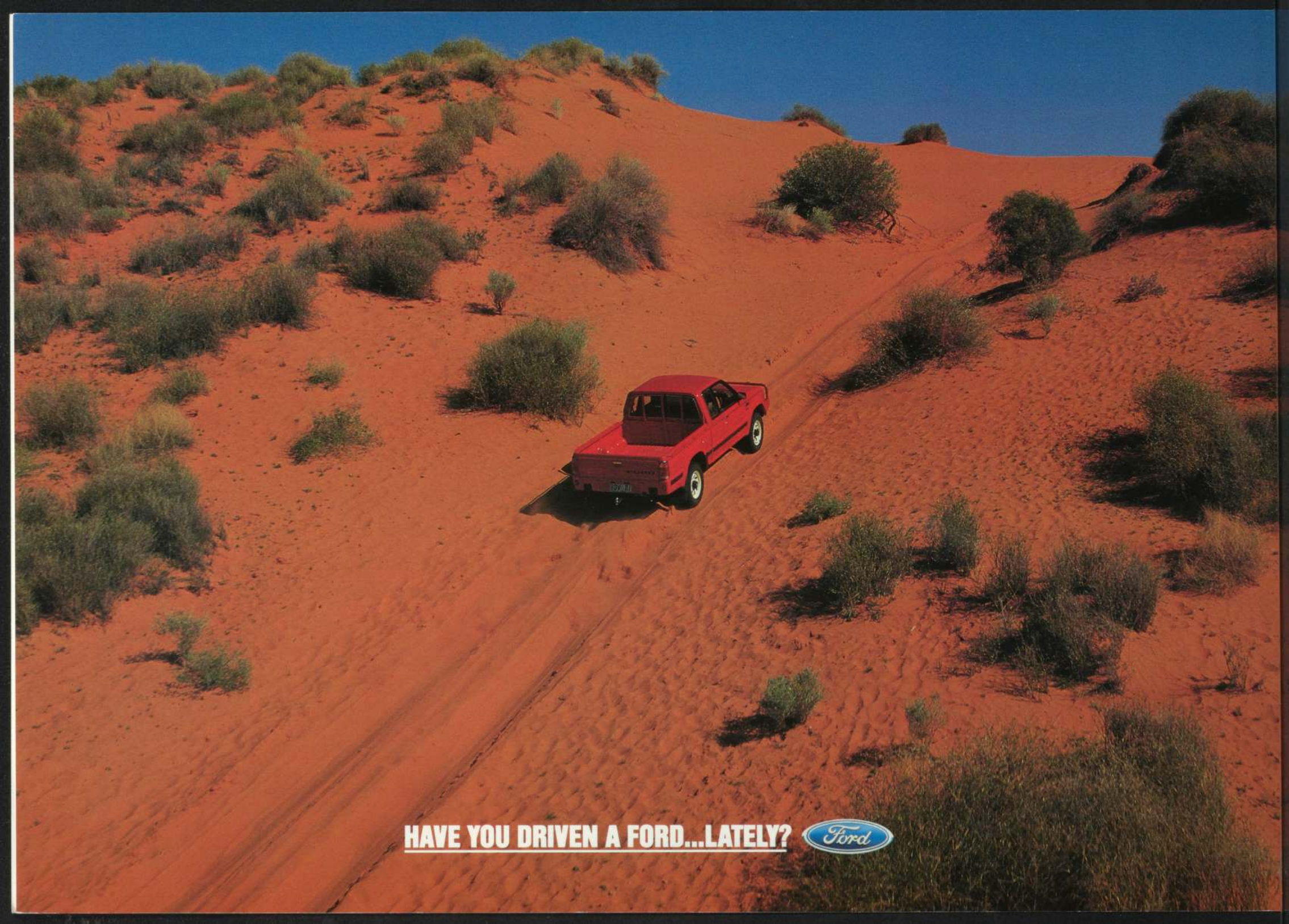
*\*Subject to State and Territory regulations*



*Bull-bar optional*







**HAVE YOU DRIVEN A FORD...LATELY?**

